



This easy-to-use guide is designed to give you an introduction to netTrekker d.i. features. For more detailed information, please visit the netTrekker d.i. online Help section at <http://school.nettrekker.com>.

- An award-winning academic search engine that's safe, fast and easy to use for teachers, school librarians, students and parents.
- Over 180,000 educator-selected online resources organized by readability level and aligned with YOUR state or provincial standards.
- Quickly and easily find resources for general-education students, ELL/ESL students, those working below or above grade level, with reading challenges, special needs and more.

*netTrekker d.i. can be accessed
from **SCHOOL** or from **HOME**.*

SCHOOL ACCESS

- Through your school's portal
- Through IP authentication
- With a shared Username and Password provided by your school
- With an individual Username and Password*

HOME ACCESS

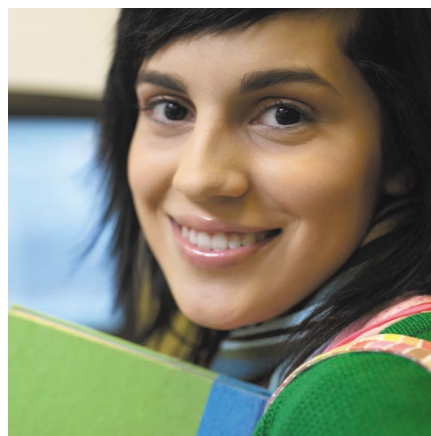
- Through your school's portal
- With a shared Username and Password provided by your school
- With an individual Username and Password*

REGISTER

**You may register your individual Username and Password by following the prompts after clicking Register on the Login page.*

USERNAME _____ PASSWORD _____

QUICK Reference GUIDE



<http://school.nettrekker.com>

NAVIGATING your netTrekker d.i. HOME PAGE

Grade Level Tabs – Open the home page for each grade level.

English Learners – Access resources specific to English Language Learners and teaching English as a second language.

Advanced Search – Further focus your search results.

Read Aloud – Provides text-to-speech support for highlighted text on pages, search results and dictionary definitions.

Search Views – Quickly search for websites, famous people, images and standards.

Keyword Search – Enter a keyword or phrase.

Subject Search – Drill down through the curriculum areas and subtopics.

Current Events Search – Link to major newspapers, magazines and other news media sources.

The screenshot shows the netTrekker d.i. High School Home Page. At the top, there are navigation tabs for 'Elementary', 'Middle', and 'High' (selected). Below these are 'All Learners' and 'English Learners' buttons. A 'Logout | Home' link is in the top right. A 'Standards' button is also present. A search bar with 'Keyword:' and a 'Search' button is located below the tabs. To the right of the search bar is an 'Advanced Search' link. Below the search bar, the page is organized into a grid of subject categories, each with a list of subtopics. The categories include Science, Social Studies, Language Arts, Mathematics, Foreign Language, Health & Physical Ed., Philosophy & Religion, The Arts, Technology, Vocational Education, Current Events, and Reference Tools. On the right side of the page, there is a 'Features' sidebar with links to 'Timeline', 'Famous Person', 'Image Search', 'References', and 'Teacher Tools'. Below this is a 'My Tools' sidebar with links to 'Profile', 'Preferences', 'Admin Tools', 'Saved Searches', 'Search History', 'Help', and 'Contact Us'. At the bottom right, there is a 'Featured Topic' section titled 'Building With Style' with a brief description and a 'Drill-Down Search' link. The page is titled 'High School Home Page' at the bottom.

netTrekker d.i. High School Home Page



Differentiated instruction to help EVERY child learn!™

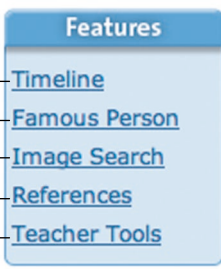
USING your netTrekker d.i. FEATURES


My Tools – Customize items specific to your individual login and access netTrekker d.i. support.



Read Aloud Control Panel – Displays Read Aloud status and other user options.

ELL Skill Development – Sites on reading and writing skills, listening and speaking skills, critical thinking and fluency.

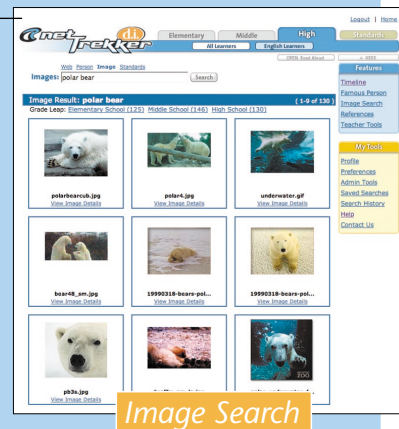


Timeline – See a dynamic Timeline of events, famous people, arts and innovations across a time span or era. Create a Timeline in Features, or view a Timeline with the  icon within your search results.



Famous Person – Search for an individual or create a list based on criteria you choose.

Image Search – Search for safe, school-friendly images to use in multimedia projects or classroom presentations.



References – Gain access to reference tools useful in conducting research.

Teacher Tools – View support materials specific to education.

Multicultural Pavilion – Geographic and cultural information, resources on ethnic identities, assimilation, cultural sensitivities and diversity.



VIEWING your netTrekker d.i. **SEARCH RESULTS**

Save Search – Save your search results for later use.

Standards – View search results that align to a particular standard.

Website Title – Opens the selected website.

Website Description – Defines the website and highlights special features.

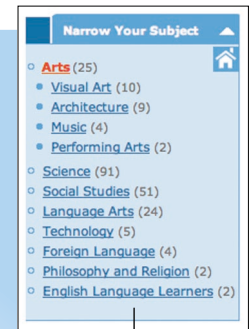
Website Content – Shows types of multimedia and general content on the website.

Foreign Language Indicator – Indicates the languages available on a website.

Did You Mean – Offers similar keywords or alternate spellings.

Refinement Tabs – Refine your search to include websites that contain a particular type of content.

Standards Search – Locate resources that align with your standards.

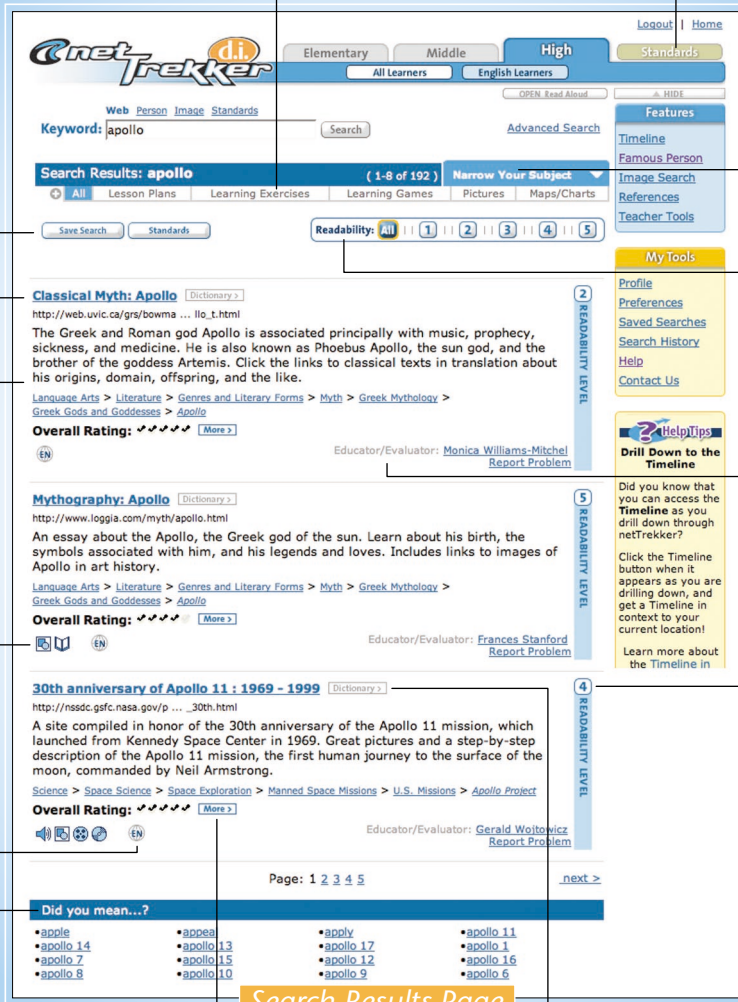


Narrow Your Subject – Display search results by school subject and topic.

Readability – Target your search results to find content at appropriate reading levels.

Educator/Evaluator – Each website is reviewed and evaluated by an educator.

Readability Score – A measure of the relative difficulty of reading written text based on Lexile® and other popular methods.



Search Results Page

More – See the website's URL, author/publisher, readability scores and more.

Dictionary



Dictionary Hot Key

Dictionary/Translation Hot Key – Provides instant access to definitions or translations.



Differentiated instruction to help **EVERY** child learn!™

<http://school.nettrekker.com>

If you have questions about netTrekker d.i., please contact Customer Support at 877.517.1125 or customersupport@netTrekker.com.